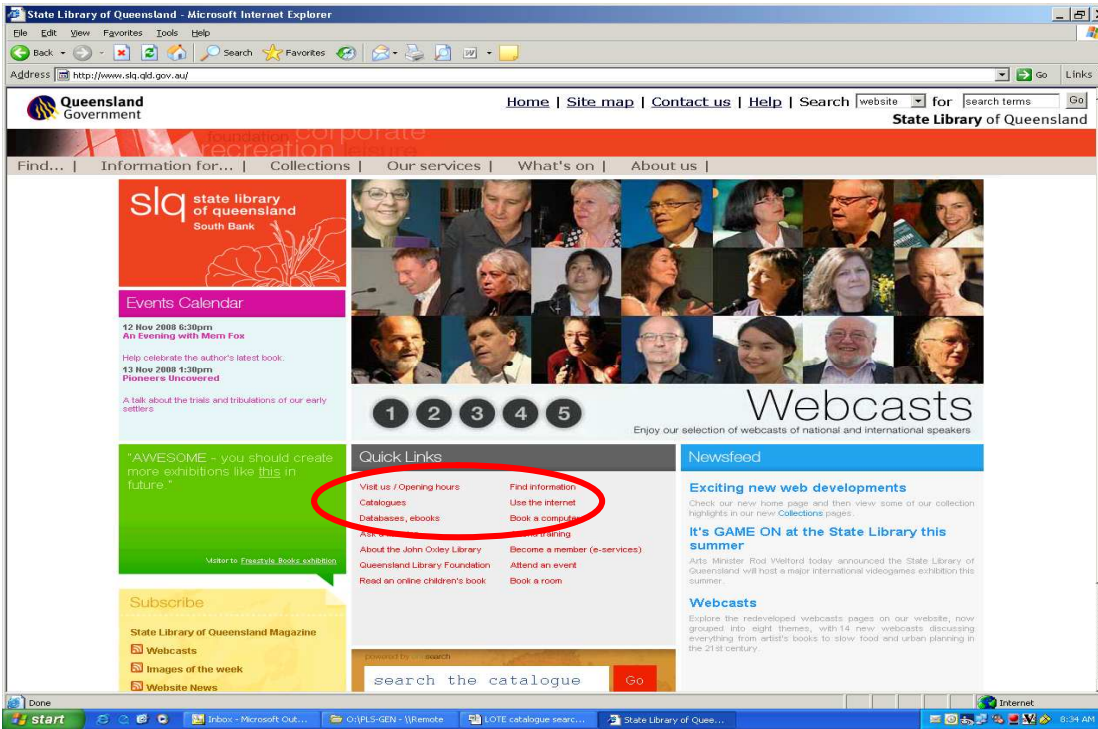


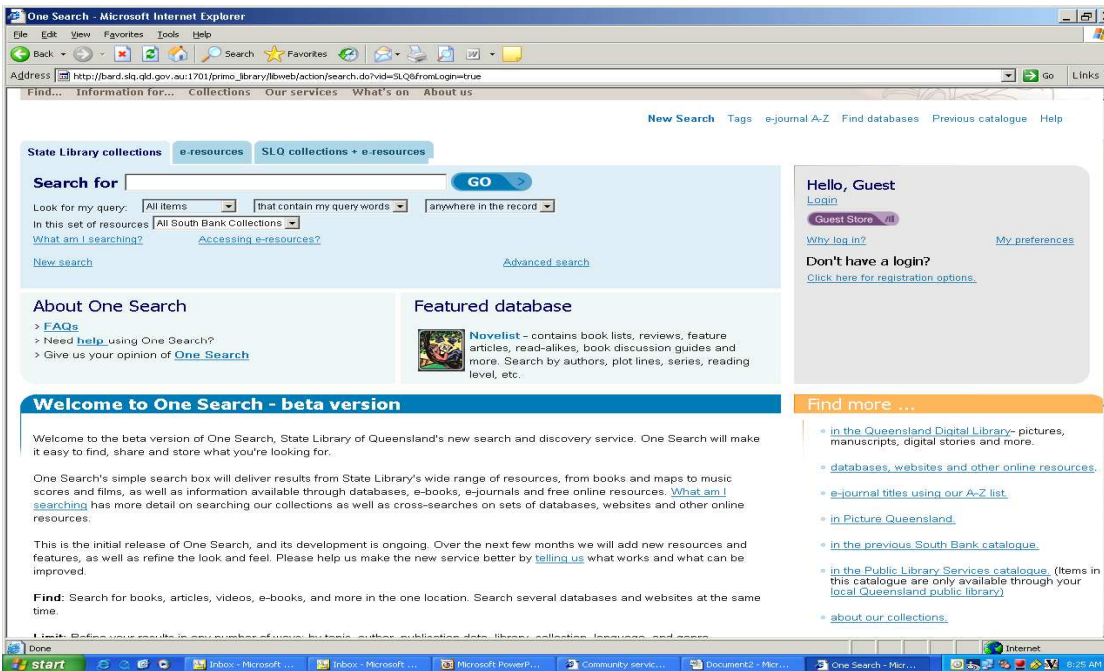
## Searching the Public Library Services catalogue for LOTE items

Visit the State Library of Queensland's home page <http://www.slq.qld.gov.au/home>

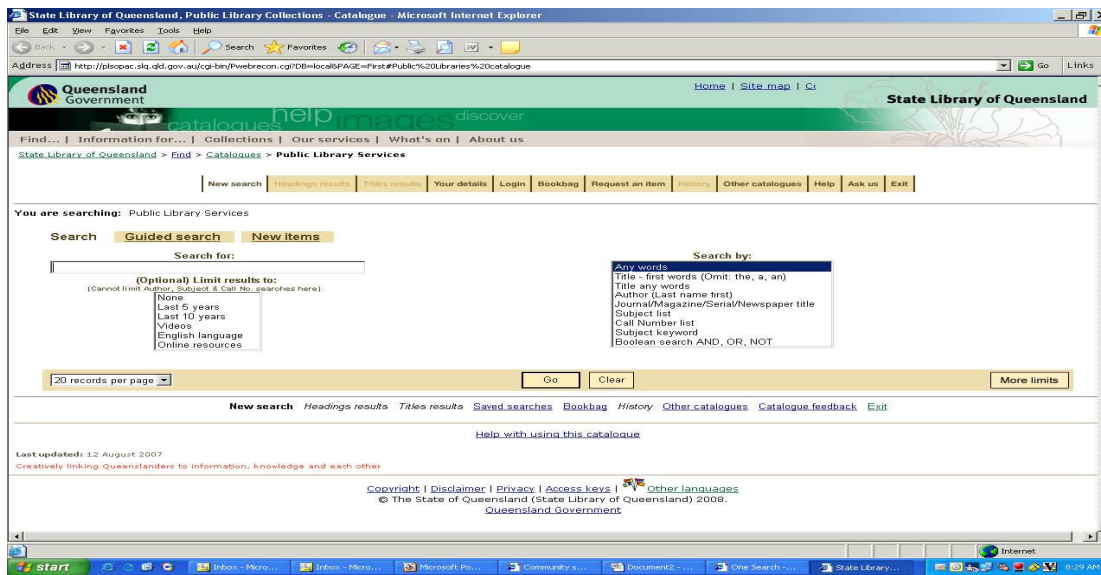
To find the LOTE material under Quick Links select *Catalogues* or use the Find tab on the top left and then select *Catalogues*.



Under *Find more* .....select in the *Public Library Services catalogue*



## Public Library Services catalogue



The following help pages show examples of these search options:

1. Limit your search to your preferred language
2. How to find everything held at PLS in your preferred language
3. How to find everything in a genre in your preferred language
4. How to find a particular form of a language such as simplified Chinese

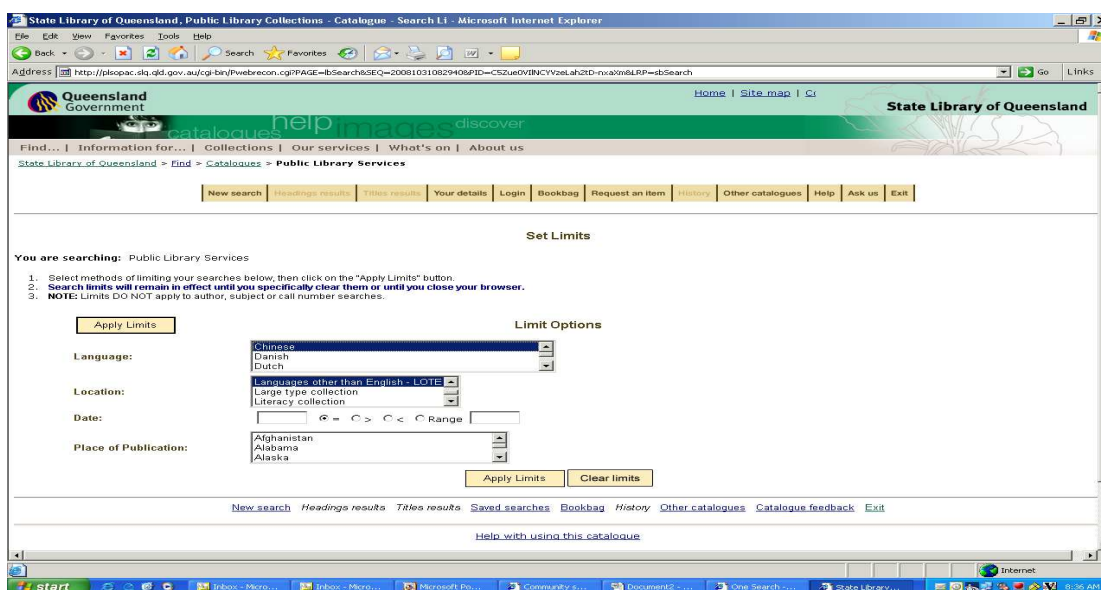
1. To limit your search to your preferred language:

Step 1: Select the *More Limits* button

Step 2: On the *Set Limits* page under Location select *Languages other than English LOTE* from the drop down menu

Step 3: Under Language select the language that you are looking for from the drop down menu

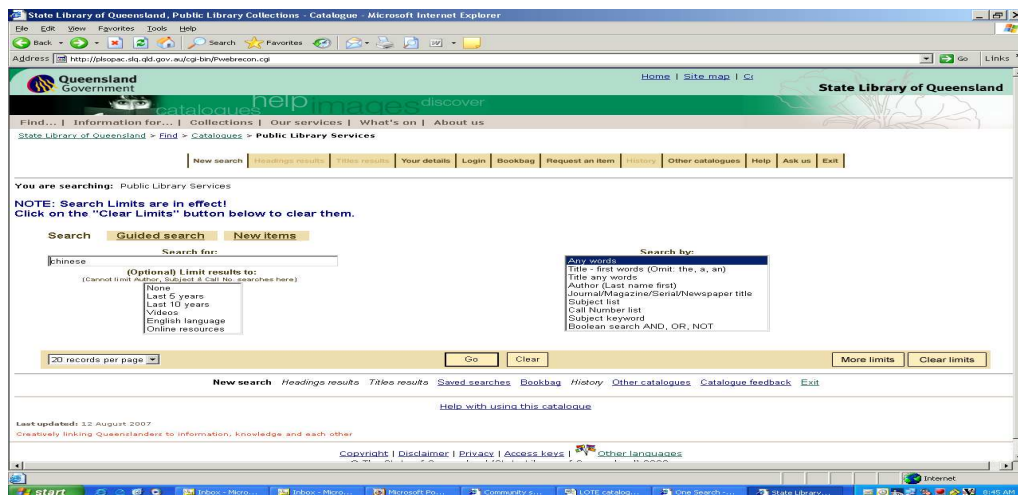
Step 4. Select the *Apply limits* button at the bottom of the page.



You will then be returned to the Search screen.  
At the search screen in the text box you can choose to:

2 Find everything held by PLS in your language.

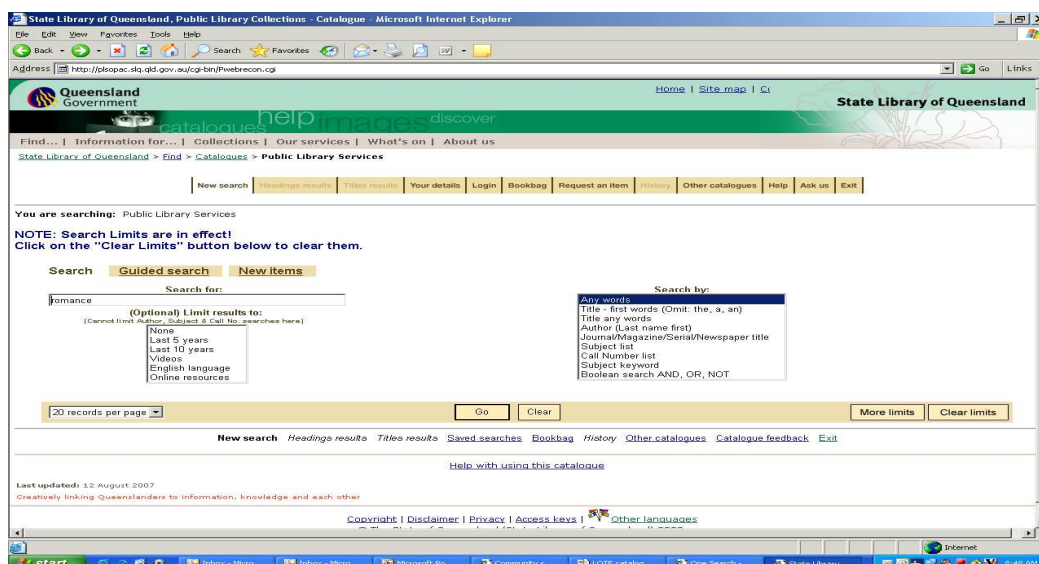
Step 1. To view the entire collection of a language held at PLS type the language name you require in the Search for area e.g. Chinese. Press the **Go** button.



3. Find everything in a genre in your preferred language.

Step 1. Ensure previous *Set Limits* option is on.

Step 2. Type in the genre to view all the items in the genre in that language held at Public Library Services. E.g. romance. Press **Go**.

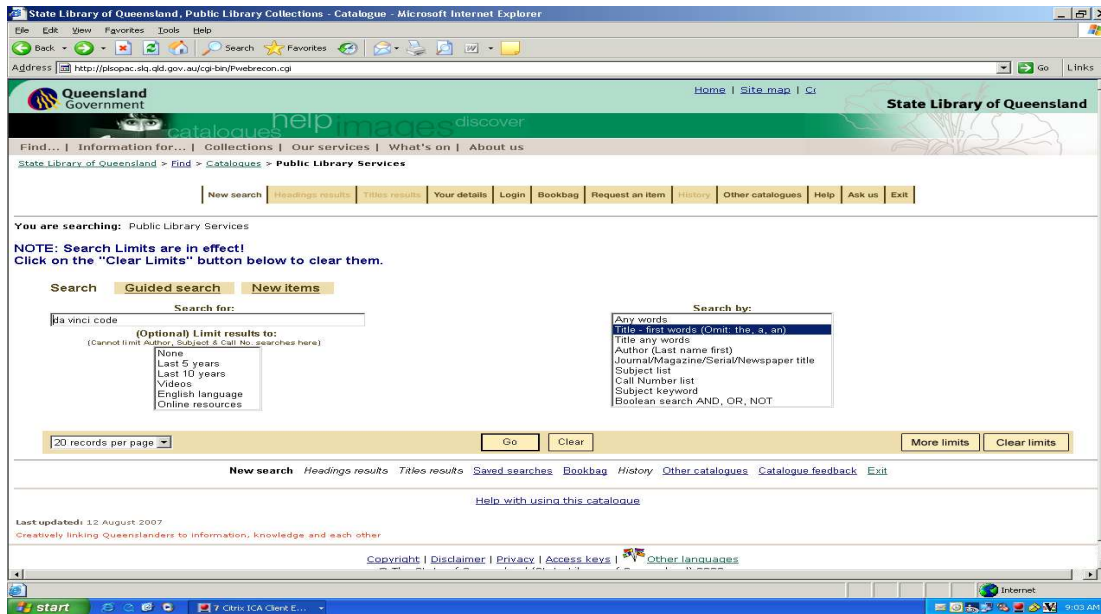


4. Find an author or title in your preferred language.

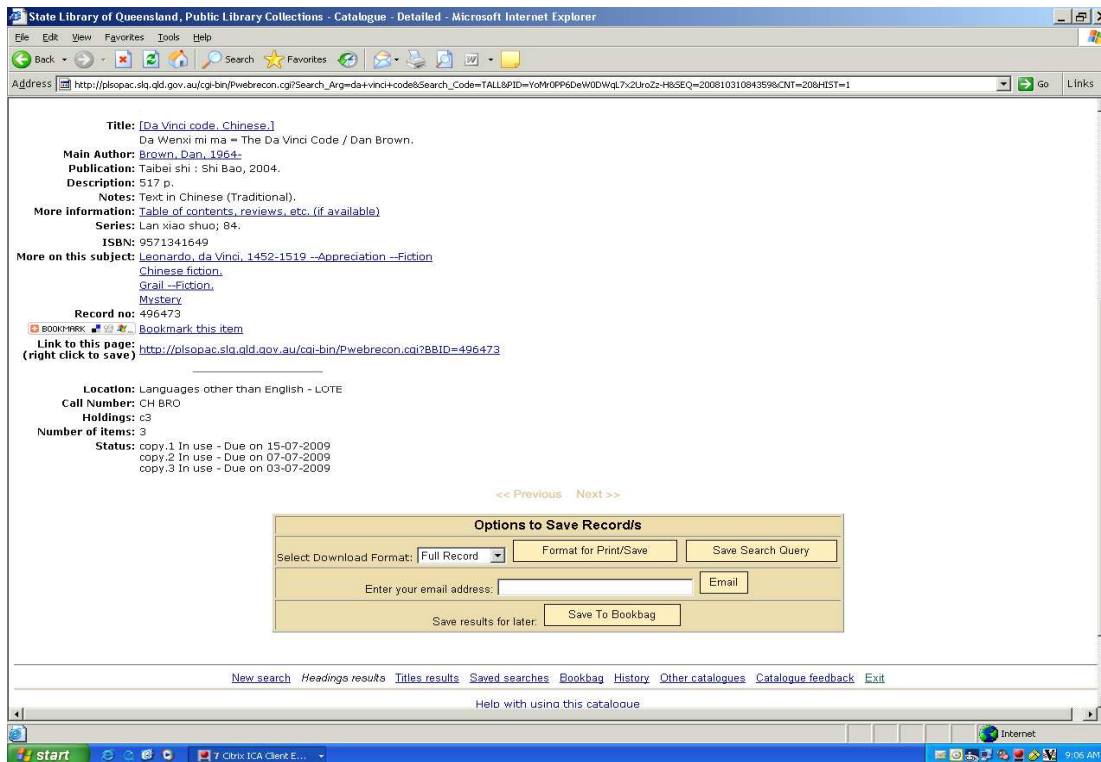
Step 1. Ensure *Set Limits* option in first step is on.

Step 2. To see if Public Library Services holds a specific item in your language e.g. Da vinci code, type the title in the *Search for* field.

Step 3. Choose: *Title – first words* in the Search by box and press **Go**



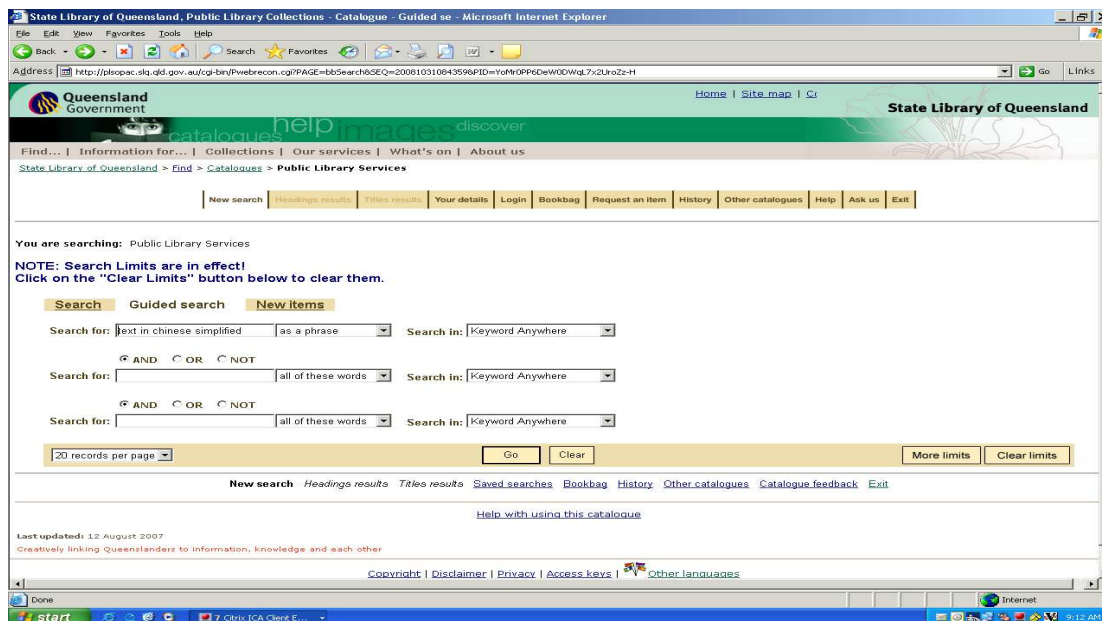
Result: Note the location information and the Status.



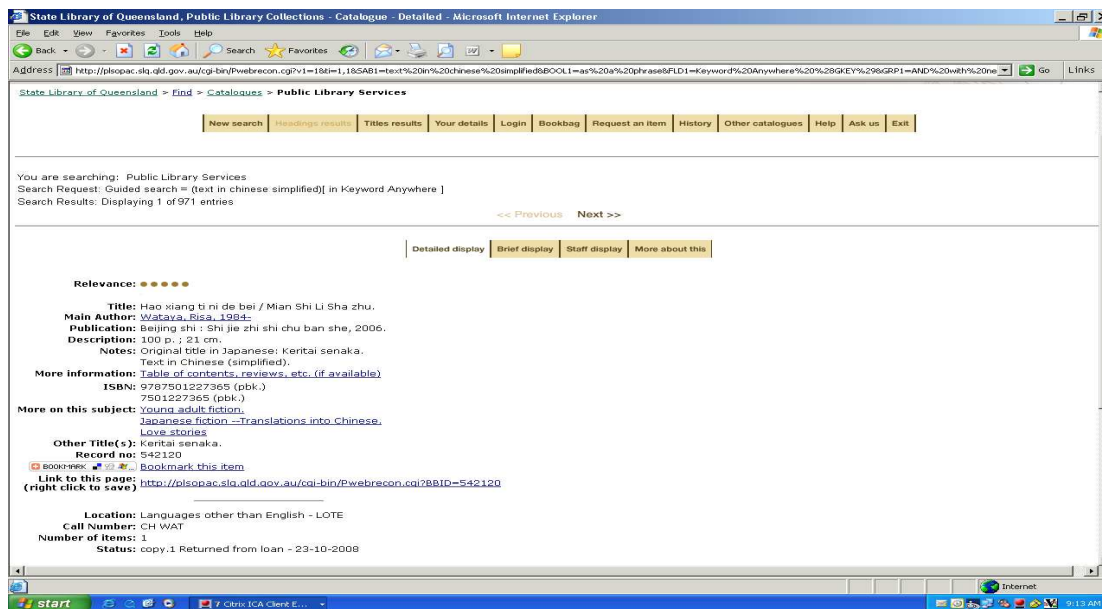
5. Find a particular form of a language.

Step 1. Should you wish to narrow your search to a specific form of a language such as simplified or traditional Chinese, use the *Guided Search* option. This may be done with or without the *Set Limits* option.

Step 2. In the *Search for* box type *text in Chinese simplified*. Choose the *as a phrase* option in the drop down box and press **Go**.



Result: Note the Text in Chinese (Simplified) in the record below.



Please contact Public Library Services staff for assistance with any of the above.  
Phone: 07 3842 9007 or Email: [pls@slq.qld.gov.au](mailto:pls@slq.qld.gov.au)

